

State of Wyoming Corner Record

(In compliance with the CORNER PERPETUATION AND FILING ACT, Wyoming Statutes, 1977 Section 36-11-101, et. seq., and the Rules and Regulations of the Board of Professional Engineers and Professional Land Surveyors)

Reverse side of this form may be used if more space is needed.

Record of original survey and citation of source of historical information (if corner is lost or obliterated). Description of corner monumentation evidence found and/or monument and accessories established to perpetuate the location of this corner. Sketch of relative location of monument, accessories, and reference points with course and distance to adjacent corner(s) (if determined in this survey). Method and rationale for reestablishment of lost or obliterated corner.

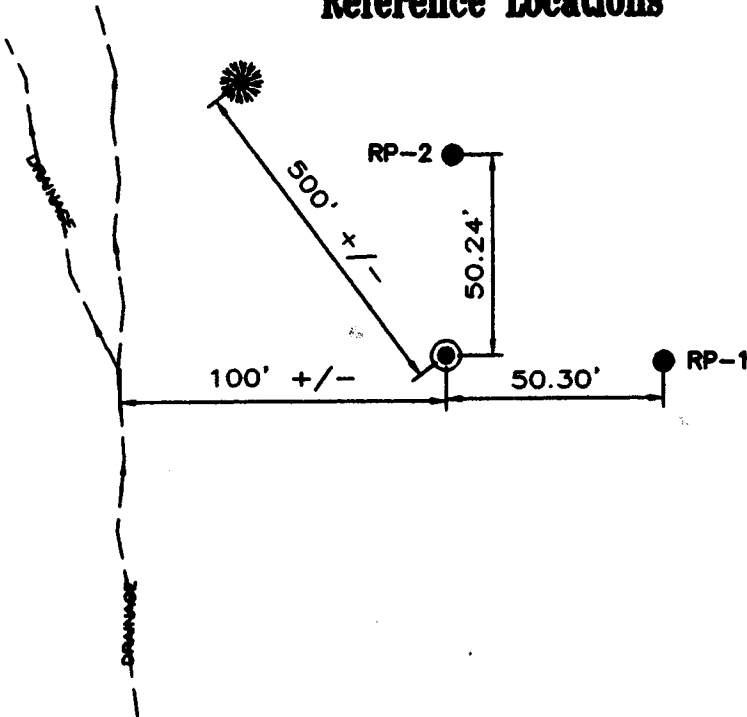
FOUND: NONE

GLO RECORD: NONE

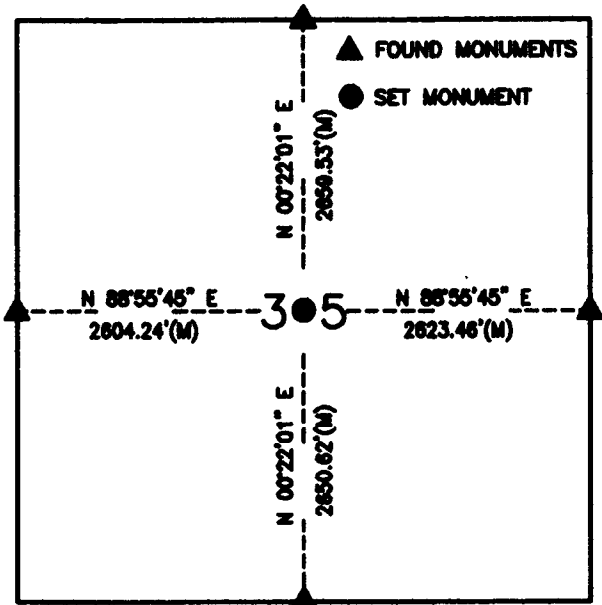
SET: BY INTERSECTION, 5/8" DIA. BY 24" LONG REBAR WITH 2" ALUMINUM CAP STAMPED.

REFERENCES: 2 - 5/8" DIA. BY 24" LONG REBAR WITH 1 1/2" ALUMINUM CAP STAMPED
RP-1, RP-2, PLS 566.

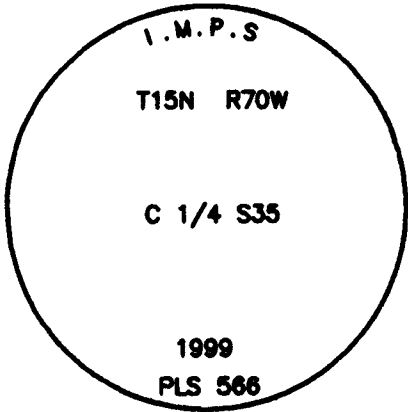
Reference Locations



Monument Location



Monument Inscription



Date of Field Work: 2/19/99

Office Reference: 3174

Cross Index Plat

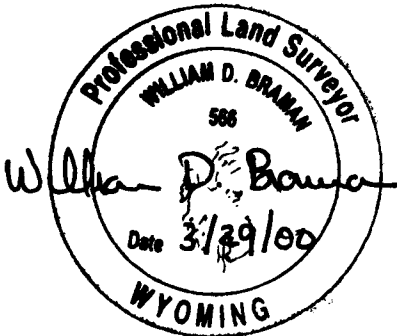
	1	2	3	4	5	6	7	8	9	10	11	12	13	14	15	16	17	18	19	20	21	22	23	24	25	
A																										
B																										
C																										
D																										
E																										
F																										
G																										
H																										
I																										
J																										
K																										
L																										
M																										
N																										
O																										
P																										
Q																										
R																										
S																										
T																										
U																										
V																										
W																										
X																										
Y																										
Z																										

Firm/Agency, Address

INTERMOUNTAIN
PROFESSIONAL SERVICES
5801 OSAGE AVENUE
CHEYENNE, WYOMING 82009
Ph: (307) 632-3138
Fax: (307) 632-3194

This corner record was prepared
by me or under my direction
and supervision.

SEAL & SIGNATURE



Corner Name CENTER 1/4 Section 35, T 15 N, R 70 W, 6th P.M.
County: LARAMIE Wyoming

Cross-Index No.: I-19